



Augmenting the Traditional with Modern Approaches of Community Financing of Higher Education in Botswana: How Feasible?



Sub-Theme: Innovative Higher Education Funding Models for Africa

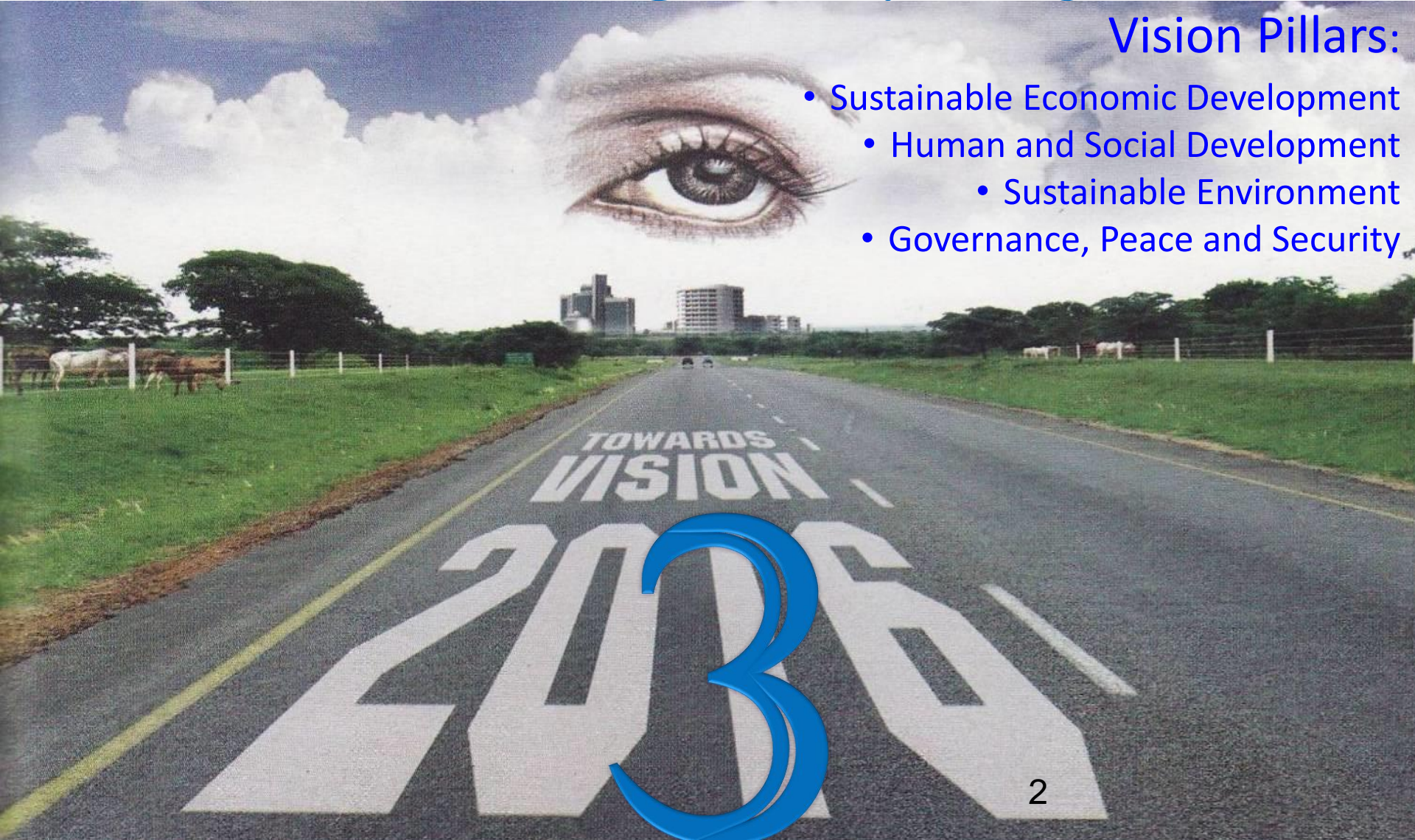
Matsoga, J. T. (PhD): Educational Foundations, Faculty of Education

Botswana Vision 2036

Achieving Prosperity for All

Vision Pillars:

- Sustainable Economic Development
- Human and Social Development
 - Sustainable Environment
- Governance, Peace and Security





Goal for the Paper

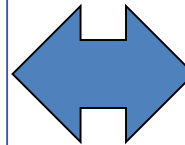
To Outline the Significance of Merging the Traditional Strategies of Raising Funds with Modern ways of Fund Raising in HE.



Botswana Educational Policy Landscape

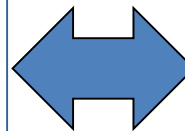
Long Term

- Vision 2036 - Botswana society will be knowledgeable with relevant quality education that is outcome based, with an emphasis on technical and vocational skills as well as academic competencies (education with production).
- Revised National Policy On Education



Short – Medium Term

- Botswana Education & Training Sector Strategic Plan (ETSSP 2015-2020)





What is the ETSSP?

Primary Goal

Provides an overall policy and strategic sector framework for the education sector that will play a pivotal role in the development of a modern, sustainable, knowledge-based economy that supports inclusiveness and diversity’.

- Five-year sector wide planning leading to improved education sector performance over the five years since 2015.
- An extensive reform that sets out to transform education & training at a strategic level.
- Addresses a number of key policy goals: **to improve access, quality, inclusion and equity, accountability and governance in the education system.**



The Higher Education Sector

What's in Place for us?

- The Coming of the Human Resource Development COUNCIL
- Botswana Qualifications Authority

Serves as a custodian of the sector

- **Checks the legality of Edu. Providers**
- **Issues of governance**
- **Student/Staff welfare**
- **Teaching Space(s)**
- **Quality of programmes & content therein**
- **Nature of partnerships**



Significance of the Paper

□ Purpose of the Paper Aimed to unpack and suggest innovative modes of sourcing funds in high education with emphasis being made on the need to merge the traditional modes of raising funds for institutions with the modern ways.

□ Methodology

- A predominantly qualitative study

Used interviews, as well as observed 13 SMME entrepreneurs around the UB perimeter fence. Three of the participants were males aged 23-27 years.

- Ten (10) were females aged 24-47 years.
- Three (3) research assistants collected
- Assortment of items sold (food stuffs, snacks; cigarettes, fruits, classroom specific items like pencils and printing paper)



Issues Surrounding Student Funding

- ❑ Previous methods of community financing of education: community pledging; small stock, chickens, eggs, donkeys, cash, etc.
- Why would the traditional approaches of pledging not be merged with what SMMEs are doing to raise funds? Why would institutions not engage these many SMMEs to source funds?



Innovative Platforms for Raising Funds

a). Building a Robust Culture of Philanthropism among University Communities.

i). Vice-Chancellor's Office and Philanthropy Building

ii). Growing a Culture of Philanthropy with the Local Community.

iii). Growing a Culture of Philanthropy with Students

b). The Alumni Relations: A Platform for University Growth



Innovative Platforms....cont'd

- c)The SMME Involvement**
- d). Facilities and Expertise owned by Universities**
- e). Internationalization of all Curricular).**
- f). External Hire of University Facilities**
- g). Active Staff Participation in Consultancies**

How Feasible?

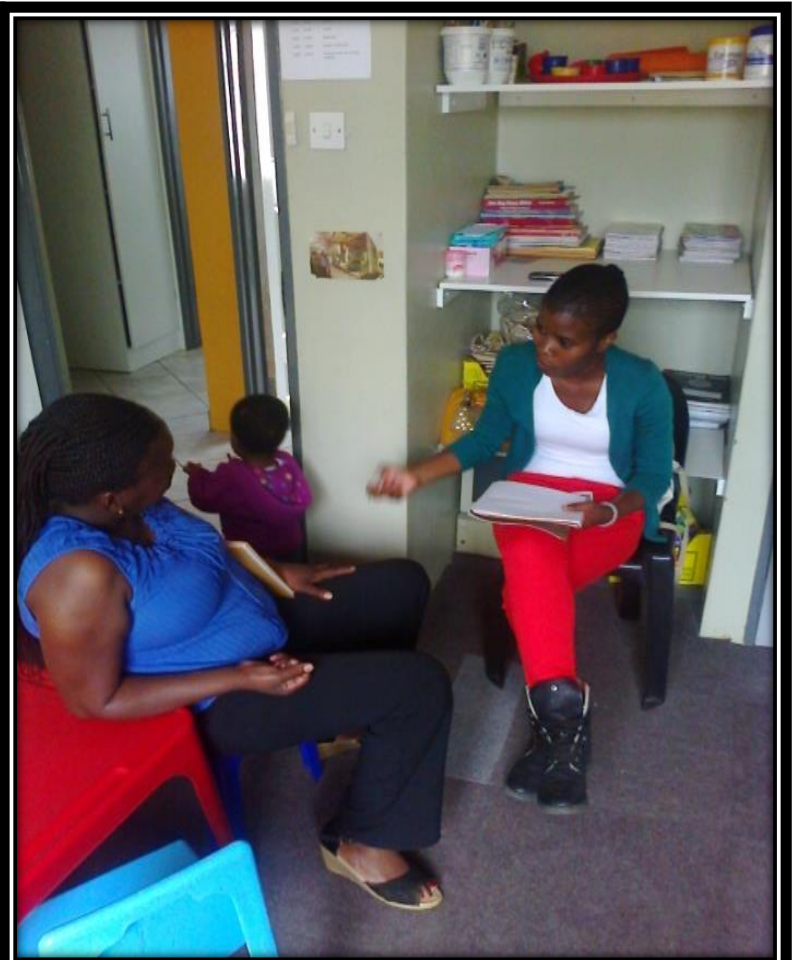
- It is feasible to have a blend of modern approaches with traditional strategies of raising funds for institutions

Conclusion

- **Universities/institutions to have strong leadership that aligns their strategic priorities**
- **Institutions to build a practice that reflects proactive external relations; and a well-resourced professional fundraising office.**
- **Need to have a more encompassing and engaging fund raising approach that blend the two forms of participation**
- **Some community members may opt to undertake auditing of university financial books at no cost**
- **Some may offer counseling services to students freely this, and this would preserve University funds.**



UNIVERSITY
of
BOTSWANA



Instructor at Work

Group processes



Class demonstration



Feeding session



To the bathrooms



Students at Work



Thank you





UNIVERSITY
of
BOTSWANA

The

Empire

